

IntelliPAP2

A Breath of Innovation



Performance. Connectivity. Comfort.



Introducing the IntelliPAP® 2 System

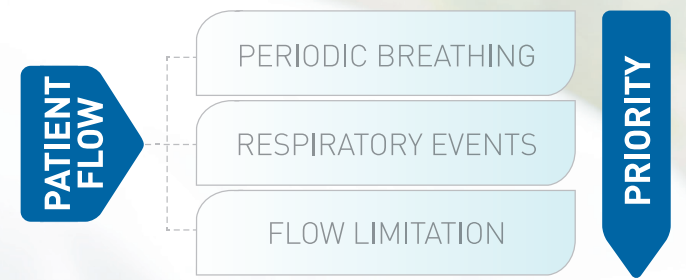
From concept to completion, we took a fresh look at how a CPAP platform could help patients across the globe obtain the best possible night's sleep. The IntelliPAP 2 series utilizes the latest advancements in sleep technology to offer effective treatment, maximum comfort and the ability to optimally monitor therapy.

Advancements in patient treatment include the PureView™ AutoAdjust® Algorithm and the revolutionary PulseDose® humidification, which dramatically minimizes tubing and mask rainout while maximizing humidification. Explore a new level of intelligent innovation with practical advantages for patients, physicians and providers.



PureView™ AutoAdjust® Algorithm

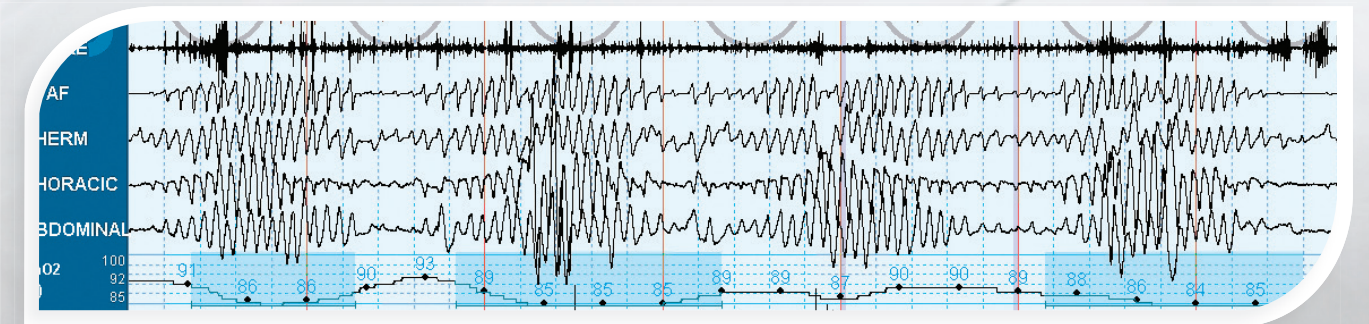
The PureView AutoAdjust algorithm in the DeVilbiss IntelliPAP 2 sets a new standard of data management and analysis. More sophisticated event detection and response* to a broad range of patient events makes this our most advanced algorithm to date, giving the user a more comfortable experience. Its powerful logic allows the IntelliPAP 2 to recognize and differentiate variability in complex breathing patterns.



The PureView AutoAdjust algorithm works intuitively with the patients natural breathing. It was developed through a clinical trial with physician recommendations to help provide your patient with the best therapy possible.** The PureView algorithm identifies a broad base of respiratory events and prioritizes pressure response based on the most relevant events. Reporting provides you with information for any type of patient condition, from simple obstructive apnea to the most complex apnea.

Periodic Breathing

The PureView algorithm identifies Periodic Breathing as a waxing and waning period with repetitive cycles. This allows the algorithm to determine if the patient has periodic breathing, central sleep apnea, or complex apnea. This approach can detect short-cycle and long-cycle (Cheyne-Stokes respiration) periodic breathing.



Respiratory Events

Discreet respiratory events include obstructive apnea, hypopnea, central apnea and arousals – flow-based respiratory event-related arousals (RERAs). Central apneas are determined by use of a small flow signal to identify the status of the airway during apnea, much like sonar uses sound waves to determine the location of an object. Here operation is silent.

Flow Limitation

Flow limitation, a flattening of the flow signal, is used by the algorithm to predict further obstructive events and can be a precursor to snore and hypopnea or apnea.

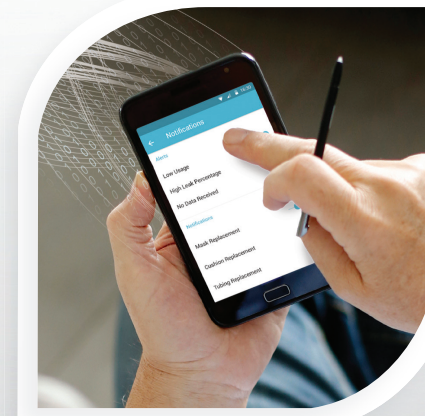
*The IntelliPAP 2 Standard Plus records, but does not respond to events.

**Study performed with support from Beth Israel Deaconess Hospital pending publication.

Stay Connected

Bluetooth™

Bluetooth technology enables wireless communication between the IntelliPAP 2 and associated components and accessories.



SmartLink App
Provides an interactive means for patients to stay engaged with their therapy, while also wirelessly transmitting data to the provider.



SmartLink SD Card
Integrated SD card in every unit provides detailed patient data.



SmartLink Web
A web-based patient management solution that provides wireless data retrieval and automated patient follow-up. It collects, stores and analyzes all of your patient's SmartCodes and alerts you if there is a potential issue.

SmartCode® Technology

Patented technology uses a proprietary encryption method that compresses CPAP data into codes that are accessed on the CPAP display. Summary data is available when the code is decrypted - SmartCode now includes data information, flow limitation and central apnea. SmartCode Rx™ technology enables remote changes of prescription through an encrypted code.



SmartLink Desktop
Provides for an interactive patient management system to viewing patient data. It provides options for wireless and SD card data collection. Clinicians can view breath-by-breath data similar to diagnostic software.



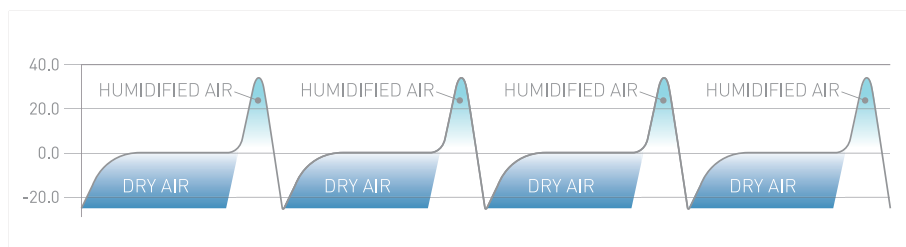
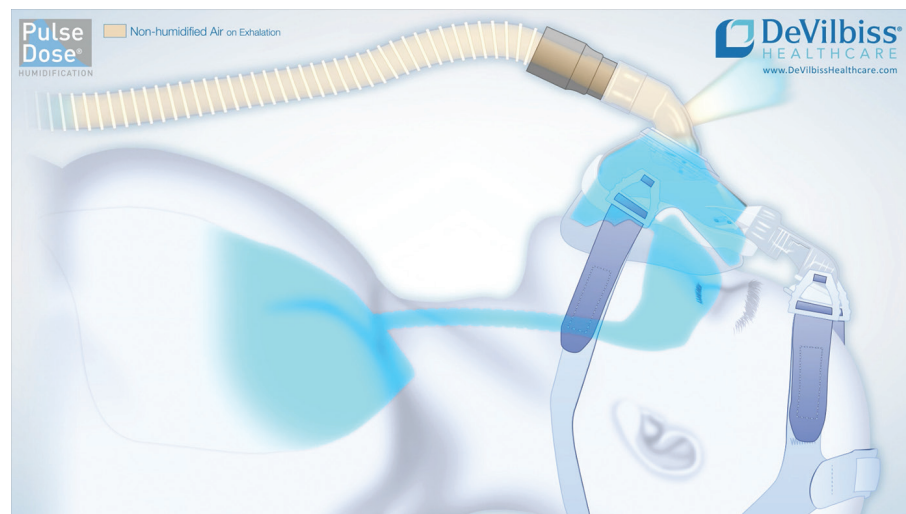
Nonin® Oximeter
Use the Nonin WristOx₂ wireless oximeter as an option to monitor oxygen levels throughout the night.



IntelliPAP.com
Web-based SmartCode Report Generator.

PulseDose Heated Humidification System

PulseDose humidification is a truly innovative approach to managing rainout in the patient tubing and mask. A predictive algorithm provides a bolus of humidified air to the patient during inhalation to ensure proper humidification. During exhalation, dry air is used to flush the humidity from the tube to reduce the chance of rainout.



- Optional modular design
- Able to use with standard tube
- Low power for reduced rainout in portable applications

Inhalation
Heated and humidified air is delivered to patient during inhalation.

Exhalation
During exhalation, the humidifier is bypassed and dry air flows through the tube to reduce rainout.

PulseDose Breath Pattern
A bolus of heated, humidified air is delivered during inhalation versus dry air during exhalation.

User Interface

The large color screen and intuitive control knob make setting up and using the IntelliPAP 2 incredibly simple. Graphical displays of functions like SmartFlex™ and Flow Rounding™ become easy to interpret and adjust. A digital clock is displayed as a screen saver and the display's brightness can be adjusted, set to dim automatically or turned off completely.



Unrivaled Quality

Apart from regular cleaning of the filter, we developed the IntelliPAP 2 to be maintenance free for its lifetime. Every device is designed, built and tested to the highest quality by our skilled and dedicated team at our home in Somerset, Pennsylvania.

Specifications and Part Numbers

IntelliPAP 2 Standard Plus System

IntelliPAP 2 Standard Plus	DV63D
IntelliPAP 2 Standard Plus w/Heated Humidification	DV63D-HH
IntelliPAP 2 Standard Plus w/Heated Humidification & PulseDose Technology	DV63D-HHPD

IntelliPAP 2 AutoAdjust System

IntelliPAP 2 AutoAdjust	DV64D
IntelliPAP 2 AutoAdjust w/Heated Humidification	DV64D-HH
IntelliPAP 2 AutoAdjust w/Heated Humidification & PulseDose Technology	DV64D-HHPD

Dimensions

- 3.7" H x 6.1" W x 5.9" D – CPAP only
- 6.3" H x 6.1" W x 7.6" D – CPAP w/humidifier

Sound level

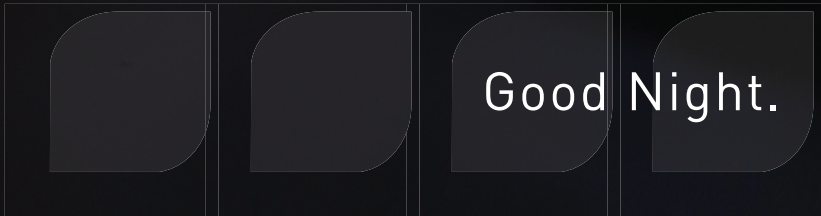
- 26.6 dBA

Weight

- 1.93 lbs – CPAP only
- 3.8 lbs – CPAP with humidifier

Pressure Range

- 3-20cmH2O



DeVilbiss[®]
HEALTHCARE

DeVilbiss Healthcare | 100 DeVilbiss Drive | Somerset, PA 15501 | USA
800.338.1988 | 814.443.4881 | www.DeVilbissHealthcare.com

© 2017 DeVilbiss Healthcare LLC 03.17 All Rights Reserved.
DeVilbiss®, IntelliPAP®, SmartCode®, SmartLink®, PulseDose® and AutoAdjust® are registered trademarks of DeVilbiss Healthcare. SmartCode Rx™, PureView™, SmartFlex™ and Flow Rounding™ are trademarks of DeVilbiss Healthcare. Nonin® and WristOX® are registered trademarks of Nonin Medical. The Bluetooth® word mark and logos are registered trademarks owned by Bluetooth SIG, Inc. and any use of such marks by DeVilbiss Healthcare is under license. LT-2305 Rev C