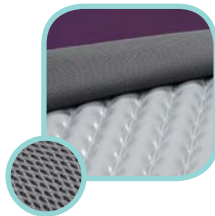


# PressureGuard® Custom Care® Convertible LAL



## Therapy Provided

- ✓ Non-powered (Air) Reactive Pressure Redistribution  
*With control unit added:*
- ✓ Microclimate Management (LAL)
- ✓ Alternating Pressure
- ✓ Lateral Rotation

## QUICK FACTS

### Indications:

- Treatment of stage I – IV pressure ulcers
- Excessive perspiration or maceration
- Patient can't/won't reposition frequently
- Prevention for high risk patients

### Key Advantages:

- Effective pressure transfer through Geo-Matt® surface geometry and dual heel protection
- Reduced maceration through continuous airflow via Air Diffusion Matrix™ layer
- More effective powered therapies through the Star Chamber™ design
- Easy-to-use control unit with quick-connect air lines and push-button therapy selection

By its very design, the PressureGuard® Custom Care® Convertible LAL delivers improved patient outcomes for microclimate management and pressure redistribution with the added benefits associated with convertible surfaces.

The inner air delivery cover of the Custom Care Convertible LAL features a dedicated air supply and continuous airflow through its Air Diffusion Matrix™. This innovative design sweeps away moisture vapor before it can re-form as a liquid, helping to reduce maceration. Furthermore, with the powered control unit, the low air loss treatment helps to control excess moisture and removes excess heat at the microclimate level via moisture management.

Effective pressure management is possible through a number of patented design features, including our Geo-Matt® surface geometry and the gentle Heel Slope® of our dual heel protection.

Item #	Description
CL753629	75" L x 36" W x 7" H
CL803629	80" L x 36" W x 7" H
CL843629	84" L x 36" W x 7" H
* CL85V29	Custom Care Convertible LAL for recessed deck frames (see page 17)
* CL80CA29	Custom Care Convertible LAL 80" for CareAssist®
* CL84CA29	Custom Care Convertible LAL 84" for CareAssist®
<b>Control Unit:</b> 8400	Add-on control unit for Custom Care Convertible LAL E0373 (Group II) (without control unit) E0277 (Group II) (with control unit)
<b>Medicare Approved:</b>	
<b>Weight limit:</b>	Supports up to 500 lbs. (non-powered & alternating modes) Supports up to 350 lbs. (lateral rotation mode)
<b>Weight:</b>	Mattress: approximately 34 lbs. Control unit: 12.5 lbs.
<b>Warranty:</b>	Mattress: 5 years, non-prorated Control unit: 2 years, non-prorated
<b>UL listed:</b>	Yes
<b>Flammability:</b>	All models conform to NFPA 101 (Life Safety Code); CalTech bulletins # 117, 129, and 603; CPSC 16 CFR Parts 1632 and 1633.

\* Allow up to 10 working days lead time for this version.

\*Hill-Rom is a mark, and CareAssist® is a registered mark, of Hill-Rom® Services, Inc.

